

GYŰJTŐ: NAGY LÁSZLÓNÉ
GYŰJTÉS IDEJE: 1982.

TART.: SZOBATBEKENDÉK ÉS RÁDOK
SZOBATFŐLD LOCSOLÓMINTÁK

Frajz

FÖLDRAJZI MUTATÓ: SEGESD

STRAK MUTATÓ:

XI,

PAPÍRIPARI VÁLLALAT



KISKUNHALASI GYÁRA

LELTÁRKÖNÉS

ATUERETVE A NA-150/84-es TÉTELE ALÓL.

Szolnok Megyei Múzeum
 MA-1739/85
 Néprajzi arattár

150-81
 KAPCSOLÓ

1-ső ábra.
 1914-1918-ig.

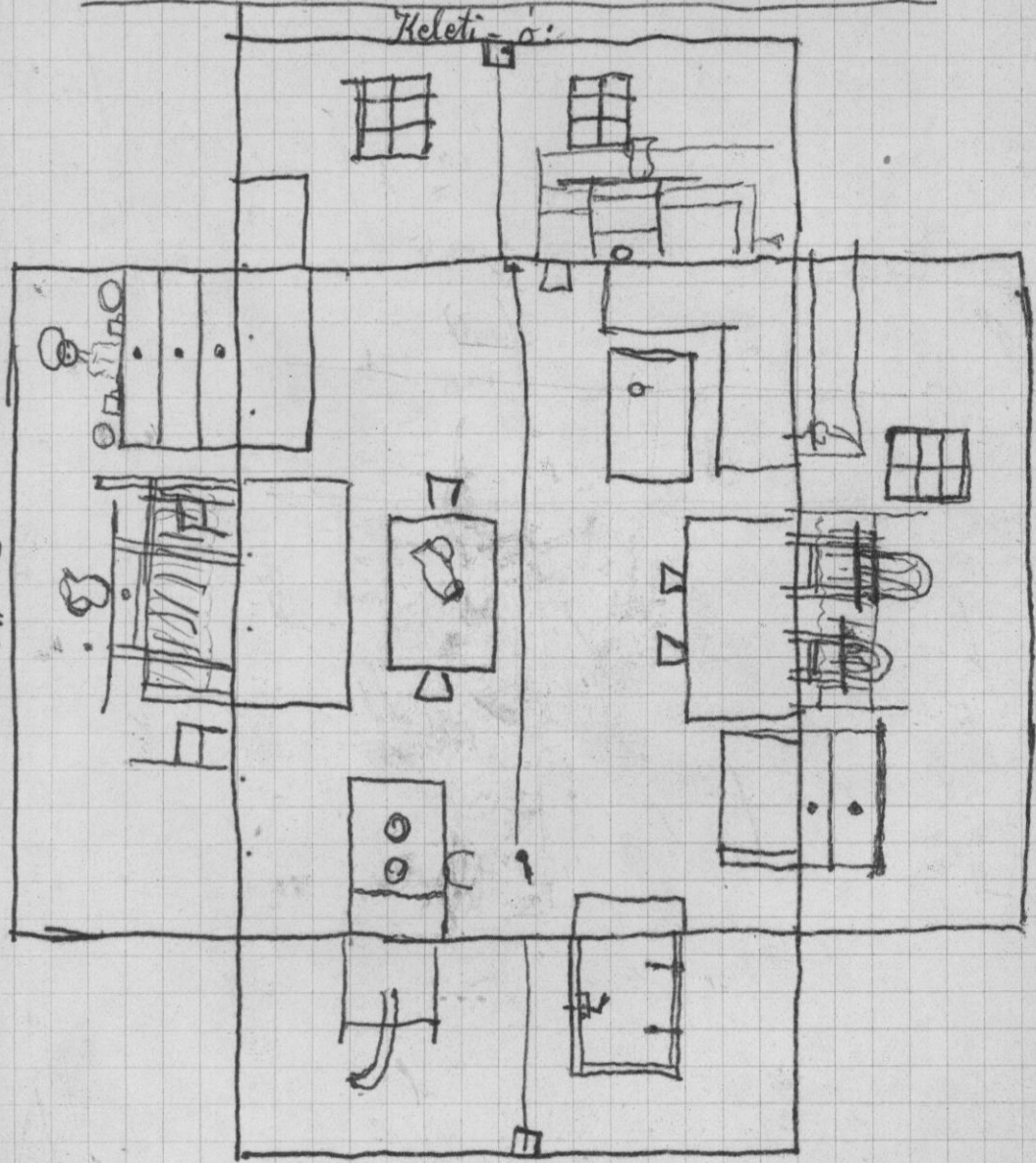
utca;

Keleti-ó:

Észak-ó

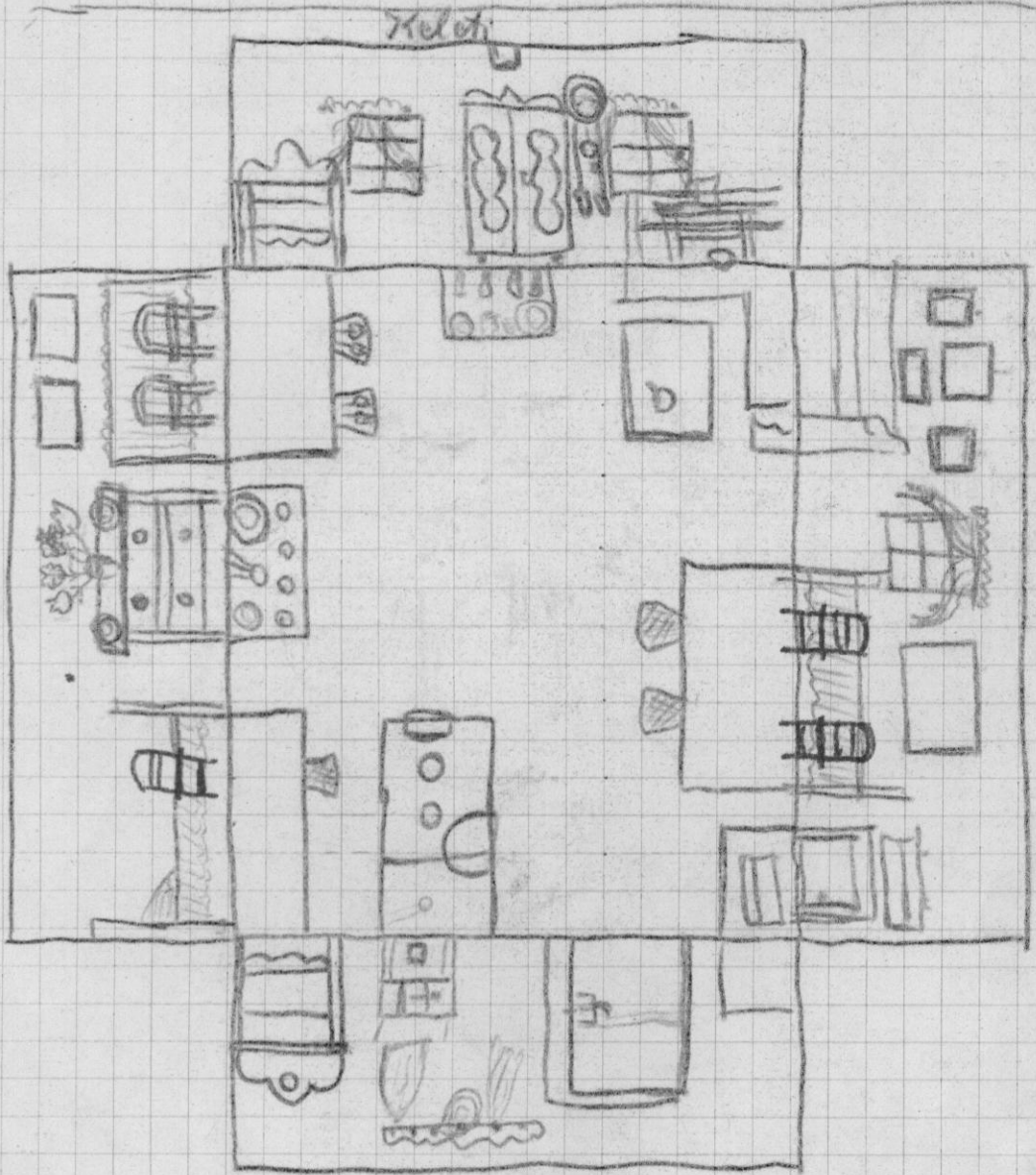
Déli-ó:

nyugati-ó:



2 es ábra

Utca. 1919-1934-ig.



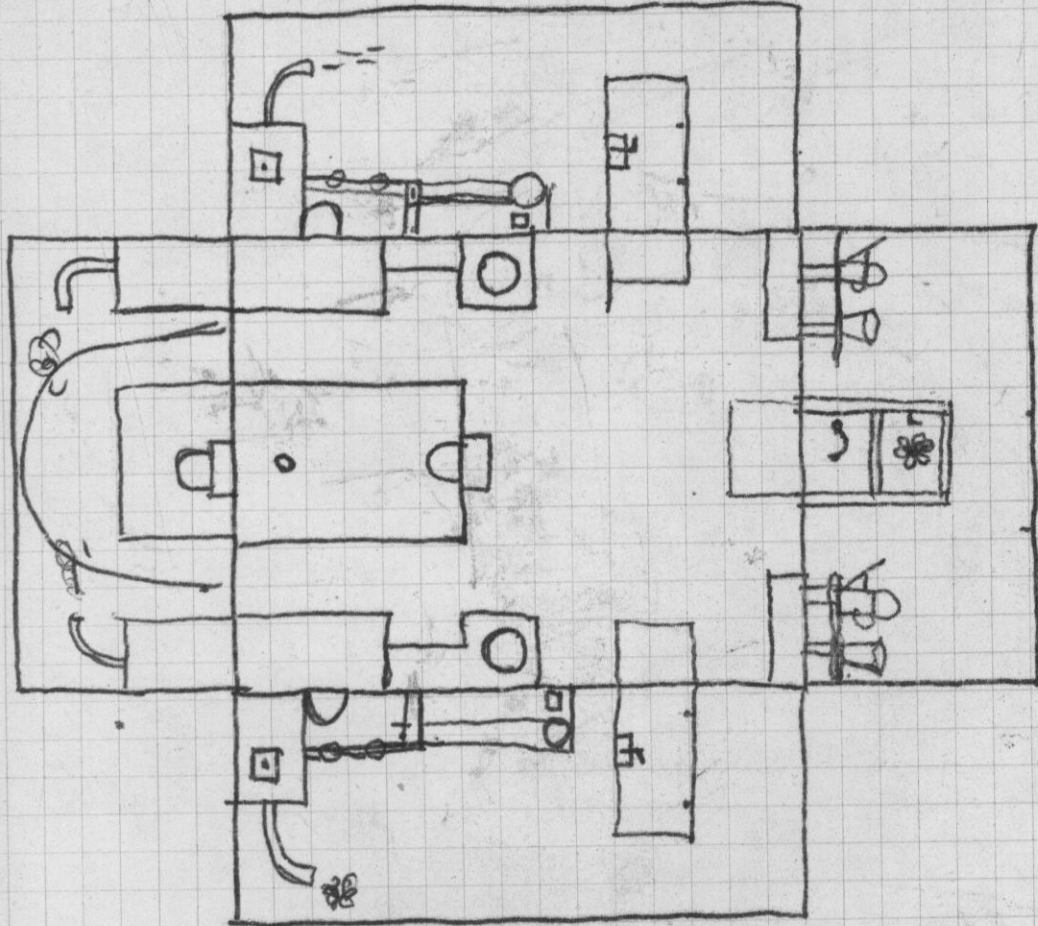
Étkező

Nappali

Szobák, ördög.

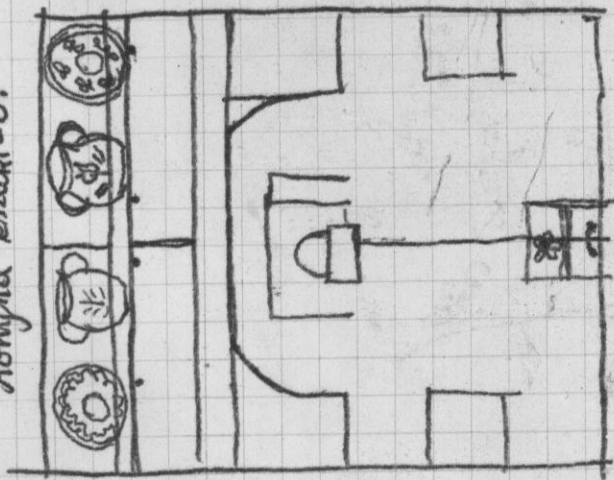
3-dik abra:

A konyha keleti oldala:



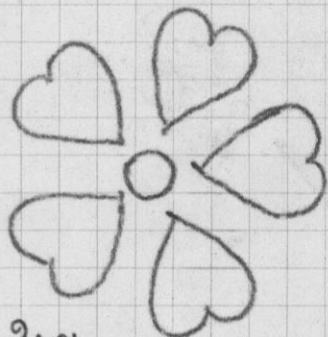
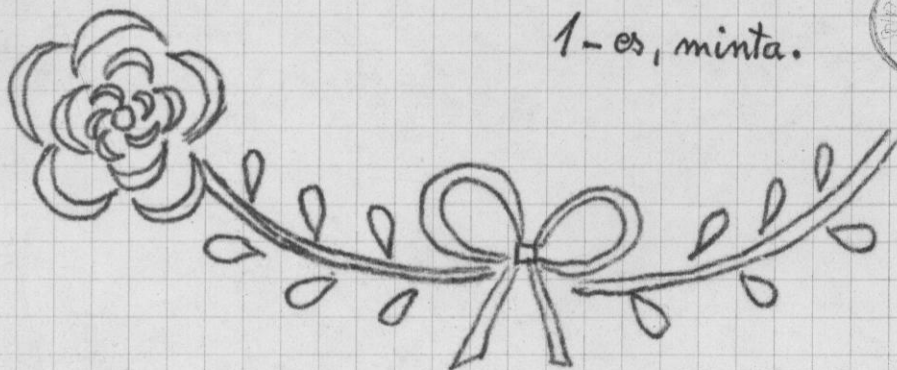
4-ik abra:

Konyha észak-0:





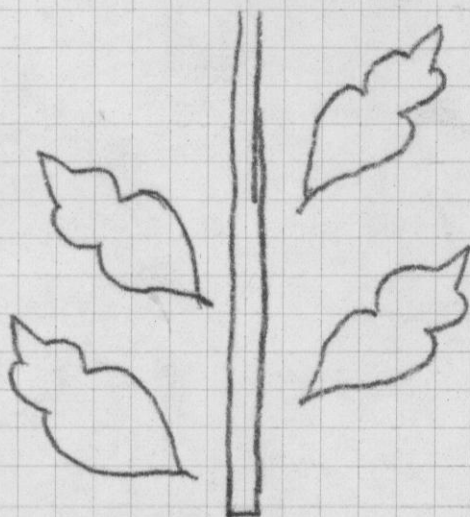
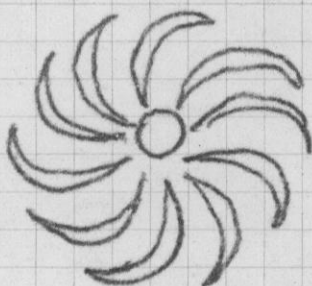
1-es, minta.



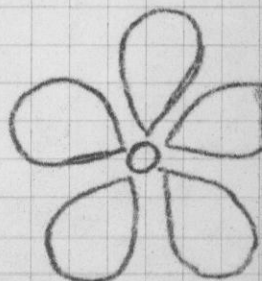
2-es.



3-es.

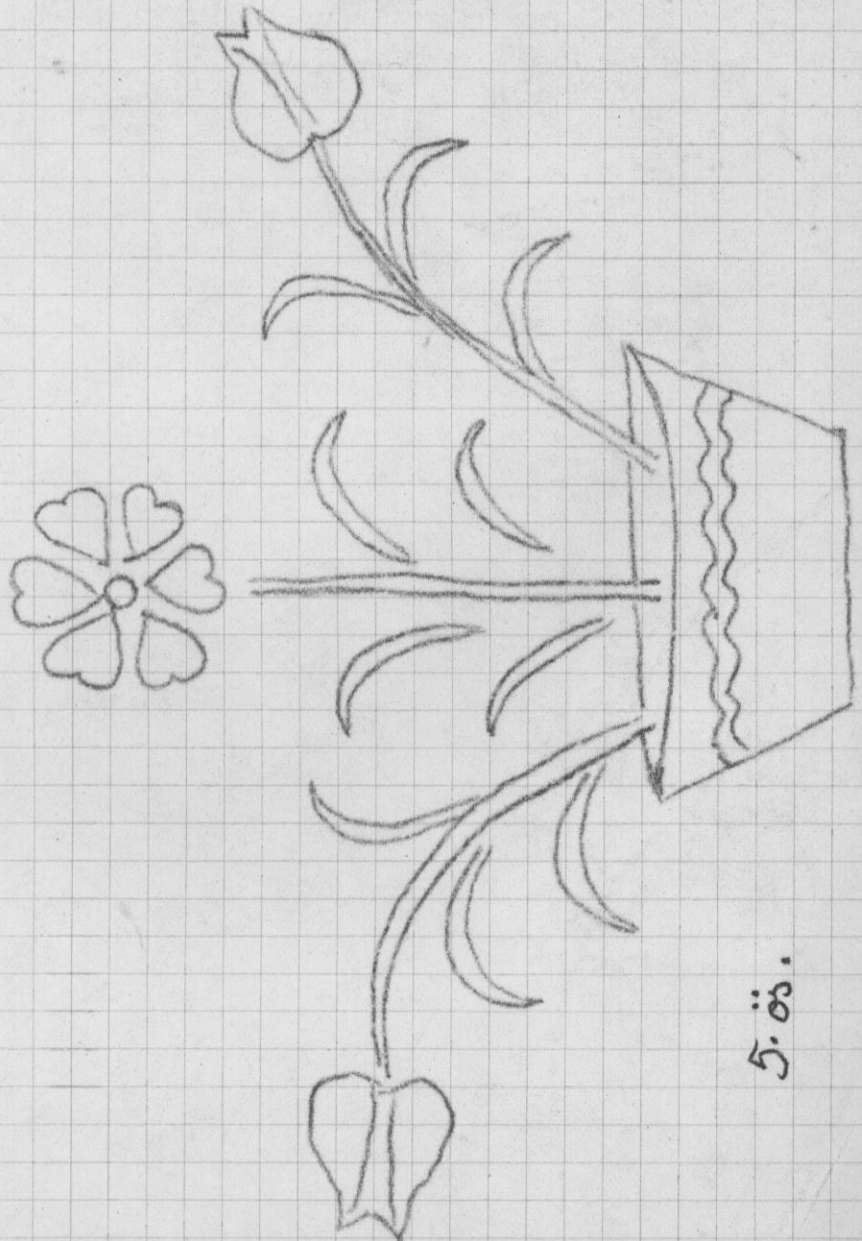


4-es.



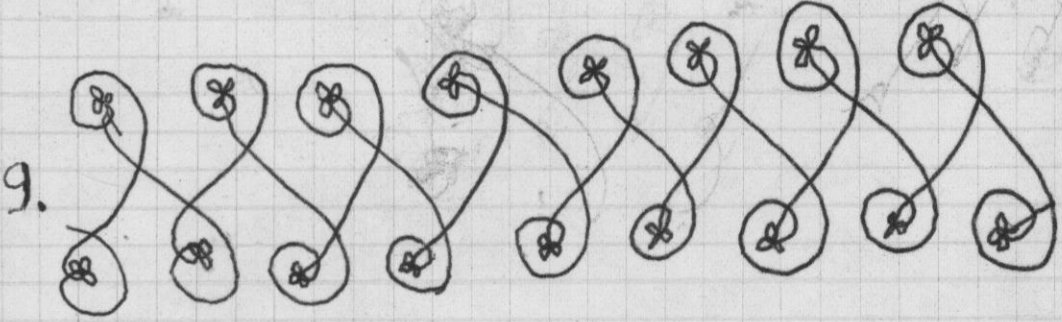
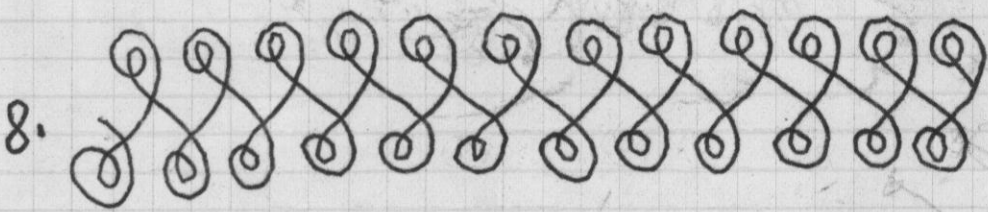
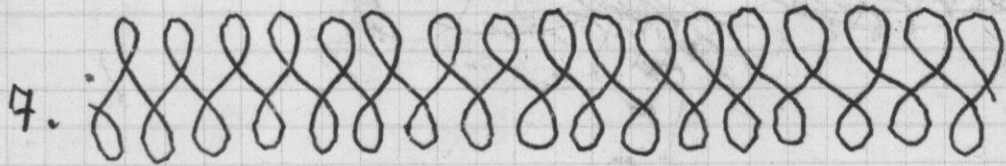
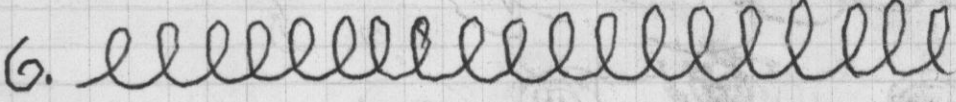
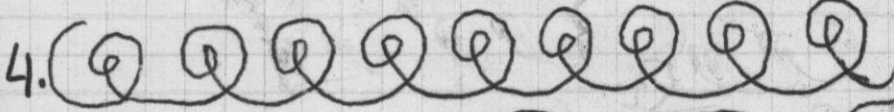
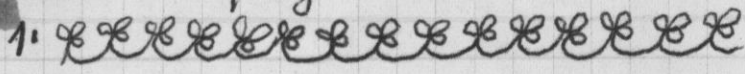
2-es.

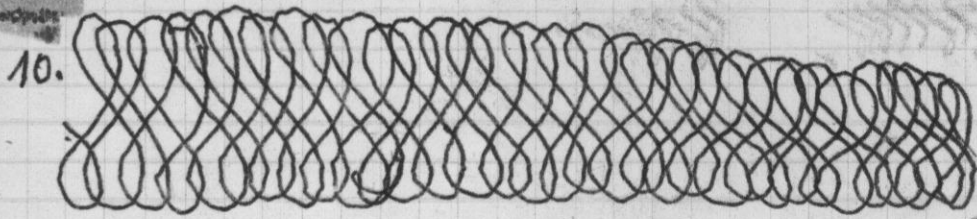
1-es, minta.



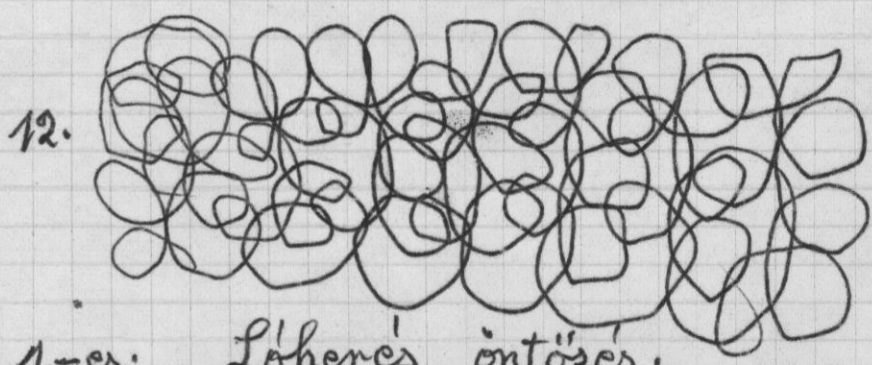
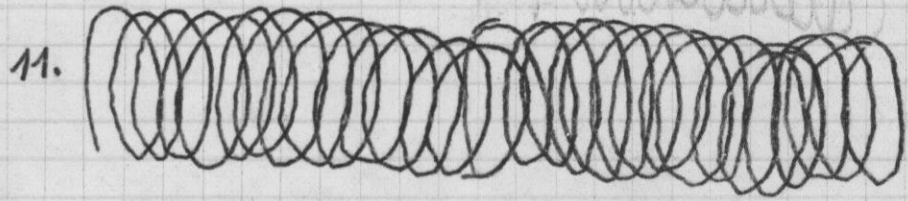
5. ös.

A szabálydíjt az alábbi mintákra öntöttük föl. 6.





BIBLIOTÉKA MIZEM
 No 84
 KISCSVAR



- | | | |
|--------|-------------|---------------|
| 1.-es: | Lóherés | öntöses. |
| 2. " | Kerített | lóherés. |
| 3. " | Afrászott | lóherés. |
| 4. " | Simpla | karikás. |
| 5. " | Dupla | karikás. |
| 6. " | Simpla | szirmos. |
| 7. " | Simpla | nyolcas. |
| 8. " | Afra | nyolcas. |
| 9. " | Lóherés | afra nyolcas. |
| 10. " | Dupla | nyolcas. |
| 11. " | Dupla | lányszeremes. |
| 12. " | Oregasszony | lánc. |